

2025 Undergraduate Admissions International Qualifications



HKBU AT A GLANCE

64th in QS Asia University Ranking 2024



2nd in THE Impact Rankings 2024
for UN Sustainable Development, Goal 4: Quality Education

670+
Full-time
faculty and
teaching staff



7,200+
Undergraduate
students



Founded in
1956



45+ Majors under
6 faculties



1900+
Students exploring
the world



370+ Exchange partners in
40+ countries/regions



**Transdisciplinary and
individualised**
pathway programmes available



Scholarships amount up to
USD108K+
for outstanding students



Career
prospects in the metropolitan
city of Hong Kong



Great Graduate Prospects, and
Gateway to China



WHY HONG KONG

Asia's Education Hub with
English as Medium of Instruction

Centre of the World's Action
Financially and Economically



A Balance of
Metropolitan and Nature



World-class
Connectivity and Safety

Programmes on Offer



FACULTY OF ARTS AND SOCIAL SCIENCES

Bachelor of Arts (Hons)

(Chinese Language and Literature / Creative and Professional Writing / English Language and Literature / Humanities / Translation) **B**

- Chinese Language and Literature **C**
- Creative and Professional Writing
- English Language and Literature
- Humanities
- Translation **C**

Bachelor of Arts (Hons) in Religion, Philosophy and Ethics

Bachelor of Arts (Hons) / Bachelor of Social Sciences (Hons)
(European Studies [French/German Stream] / Geography / Global and China Studies / Government and International Studies / History / Sociology) **B**

- European Studies [French / German Stream] **X**
- Geography
- Global and China Studies
- Government and International Studies
- History
- Sociology

Bachelor of Arts (Hons) in Physical Education and Recreation Management

Bachelor of Social Work (Hons)

SCHOOL OF BUSINESS

Bachelor of Business Administration (Hons) **B X**

- Economics and Data Analytics
- Finance
- Human Resources Management
- Information Systems and Business Intelligence
- Marketing
- Strategic Retail Management and Innovation

Bachelor of Business Administration (Hons) – Accounting Concentration **X**

Programmes listed are 4-year honours programmes unless otherwise specified.

The programme list and information shown above are for reference only and subject to revision. Please refer to our website (<https://admissions.hkbu.edu.hk/en/international.html>) for the most updated list.



SCHOOL OF CHINESE MEDICINE

Bachelor of Chinese Medicine and Bachelor of Science (Hons) in Biomedical Science **C** **6** **1**

Bachelor of Pharmacy (Hons) in Chinese Medicine **C**

SCHOOL OF COMMUNICATION

Bachelor of Communication (Hons)
(Journalism and Digital Media / Public Relations and Advertising) **B** **X**

- Data and Media Communication
- Journalism
- Advertising and Branding
- Public Relations

Bachelor of Communication (Hons) in Game Design and Animation

SCHOOL OF CREATIVE ARTS

Bachelor of Arts (Hons) / Bachelor of Music (Hons)
(Music / Creative Industries) **B**

- Music
- Creative Industries

Bachelor of Arts (Hons) in Film and Television

Bachelor of Fine Arts (Hons) in Acting for Global Screen

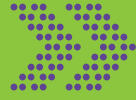
Bachelor of Arts (Hons) in Visual Arts

B Broad-based Admissions (declare a Major / Concentration after first-year studies)

X Overseas Double / Combined Degree Study Opportunities

C Applicants applying to the programme are expected to possess a Chinese language qualification as deemed acceptable by the University.

6 6-year Double Degree Programme



FACULTY OF SCIENCE

Bachelor of Science (Hons) ^①

- Applied Biology
(*Biotechnology / Environmental Science*)
- Applied Biology and Ecology and Conservation ^②
- Biochemical and Testing Sciences
(*Biomedical Chemistry / Testing and Certification*)
- Bioresource and Agricultural Science
- Computer Science
(*Artificial Intelligence / Computing and Software Technologies / Data and Media Communication / Information Systems and Analytics*)
- Green Energy and Smart Technology
- Mathematics and Statistics
(*Applied Statistics / Data Science*)

Bachelor of Science (Hons) in Business Computing and Data Analytics ^②

TRANSDISCIPLINARY / INDIVIDUALISED PATHWAY PROGRAMMES

Bachelor of Arts and Science (Hons) in Arts and Technology ^③

Bachelor of Arts (Hons) in Business Administration (Global Entertainment) ^③

Bachelor of Social Sciences (Hons) / Bachelor of Science (Hons) in Innovation in Health and Social Well-Being ^④

Bachelor of Arts, Science and Technology (Hons) in Individualised Major ^⑤

Bachelor of Arts and Science (Hons) in Digital Futures and Humanities ^④ ^⑥ **NEW**

^① "Bachelor of Chinese Medicine" is a general programme and "Bachelor of Science in Biomedical Science" is an honours programme.

^② The programme is co-offered by the Faculty of Science and the School of Business.

^③ The programme is hosted by the School of Creative Arts.

^④ The programme is hosted by the Faculty of Arts and Social Sciences.

^⑤ The programme is housed in and coordinated by the Division of Transdisciplinary Undergraduate Programmes, the Institute of Transdisciplinary Studies.

^⑥ New transdisciplinary programme to be offered from 2025 entry.

Transdisciplinary Second Majors / Second Majors

The University envisions the importance of transdisciplinary innovations in response to the global challenges and offers a flexible curriculum structure that is much more agile and fits the present and yet-to-known future needs.

Students will have the opportunity to opt for a transdisciplinary second major (TSM) / second major (SM) on top of their major. TSMs are geared for particular talent needs in Hong Kong and prepare students to pool knowledge from different disciplines to excel in multiple careers, whereas SMs prepare students to gain in-depth knowledge from another discipline to complement the first major. This approach equips students not only for their careers, but also the future development of their respective fields.

Students can declare one of the following TSMs / SMs by the end of the first semester of their second year's study and commence the TSM / SM studies in Year 3. The following TSMs / SMs will be launched in the 2025/26 academic year.

Transdisciplinary Second Majors

Cultural Industry Management

Creative Industry Management

Digital Entertainment

Interactive Media Publishing

Green Technology and Sustainability Management

Applied AI for Sustainable Society

Entrepreneurship and Innovation Management

Second Majors


AI and Data Science

Testing Sciences

For students pursuing a TSM / SM, they are required to complete a minimum of 134 units.

General Entrance Requirements and English Language Requirements

General Entrance Requirements

American-Patterned Education	High School Graduation Diploma with one of the following: <ul style="list-style-type: none">• SAT : Minimum score of 1,190 out of 1,600• AP : Grade 3 in at least two AP subjects• ACT : Minimum composite score of 23
British-Patterned Education	GCE Advanced Level (AL) / International Advanced Level (IAL) <ul style="list-style-type: none">• Grade E or above in three AL / IAL subjects; or• Grade E or above in two AL / IAL subjects plus two ASL subjects (Not including Chinese and English Language subjects. The same subject cannot be counted at both AL and ASL.)
International Baccalaureate	IB Diploma
Full List of Recognised Qualifications	https://admissions.hkbu.edu.hk/ug/intl_requirement 

Programme Entrance Requirement

Please note that certain programmes have specific Programme Entrance Requirement(s). Please refer to the admission website for details.

<https://admissions.hkbu.edu.hk/en/international.html>



English Language Requirements

TOEFL	Internet-based test (iBT) / iBT Home Edition / iBT Paper Edition – Score: 79 or above (TOEFL MyBest™ Score is not accepted.)
IELTS Academic	Overall Band: 6.0 or above

Advanced Standing for Year 1 Entrants

If you are admitted with international qualifications such as GCE, IB and SAT, you may apply for transfer of units. More information at https://ar.hkbu.edu.hk/course_exemption



Fees and Scholarships

Local Students

Tuition Fee ²	HKD44,500 Per Annum
Admission Scholarships	Outstanding local students with international qualifications (GCE, IB, SAT) will be awarded a one-off scholarship up to the annual tuition fee ² .

Non-local Students*

Fees and Expenses

Estimated Cost Per Academic Year ¹

	HKD	USD (Approx.)
Tuition Fee ²	175,000	22,500
Student Residence Fee ^{2&3}	22,000 – 28,000	2,800 – 3,600
Personal Expenses ³	30,000 – 50,000	3,850 – 6,400
Total	227,000 – 253,000	29,150 – 32,500

* Non-local students are defined as persons entering Hong Kong for the purpose of education with any of the following student visa/ entry permit issued by the Director of Immigration of the Hong Kong Government:

- student visa/ entry permit
- visa under the Immigration Arrangements for Non-local Graduates (IANG)
- dependent visa, who are aged 18 years old or above when they were issued with such visa

Those who do not belong to this category will be considered as local applicants.

Admission Scholarships

Estimated Cost Per Academic Year ¹

Full Scholarship (100% tuition + living subsidies) ^{2&4}
100% Tuition Scholarship ^{2&4}
Half Scholarship (50% tuition + living subsidies) ^{2&4}
Other Entrance Scholarship (25% tuition or above) ²

Successful candidates will be informed of the scholarship award together with the notification of admission offer. No separate application is required.

1. An academic year normally lasts for 9 months.
2. Subject to University's annual review.
3. Actual costs vary with personal lifestyle choices.
4. The Scholarship is tenable for the normal duration of the programme and is renewable annually subject to satisfactory academic performance.

Apply Now



Online Application System

Application Rounds

International (Non-local Non-mainland Chinese) Students

Early Round

2 Oct 2024 – 10 Nov 2024¹

Main Round

11 Nov 2024 – 31 Jan 2025²

Extended Round

1 Feb 2025 – 30 May 2025²

¹ Applications received in early round will be shortlisted for advance assessment. Admission offers are released from late December 2024 onwards. Applicants who do not receive offers by late January 2025 will be considered together with Main Round applicants.

² Admission offers are released on a rolling basis.

Local and Mainland Chinese Students*

Main Round

2 Oct 2024 – 2 Jan 2025

Extended Round

3 Jan 2025 – 30 May 2025

*Depending on the programme choice, admission offers may be released on a rolling basis.

Application Procedures

- 1 Apply**
 - Apply via <https://admissions.hkbu.edu.hk>
 - Upload supporting documents
 - Settle application fee of HKD450 (approx. USD58) for both local and non-local students
- 2 Process**
 - Check your email and online application account regularly
 - Attend interview, if any
 - Receive conditional or firm admission offer, if any
- 3 Offer Acceptance**
 - Settle admission confirmation fee
- 4 Fulfilment of Offer Conditions (if applicable)**
 - Submit supporting documents
- 5 Orientation**
 - Complete new student registration and join orientation activities in mid-August 2025
 - Commence study in early September 2025

CONTACT US

Admissions Office | Academic Registry
Hong Kong Baptist University

☎ (852) 3411 2200 ✉ ardirect@hkbu.edu.hk

🌐 <http://admissions.hkbu.edu.hk>

 HKBU UG Admissions



Information provided in this brochure is as of November 2024.

The University reserves the rights to change the content without prior notice. Please visit our website for the latest information.